

Mean Platelet Volume in Patients with Acute Coronary Syndromes: A Supportive Diagnostic Predictor

RANDHEER PAL¹, RAJEEV BAGARHATTA², SANDHYA GULATI³, MONIKA RATHORE⁴, NIDHI SHARMA⁵

ABSTRACT

Background: Platelets and their activity have a crucial role in acute coronary events. Larger platelets are enzymatically and metabolically more active and have a higher potential thrombotic ability as compared with smaller platelets.

Objectives: The aim of this study is to investigate whether there is an association between mean platelet volume (MPV) measurement and cardiac Troponin I (cTn I) in patients admitted with a suspected diagnosis of ACS and to assess the potential diagnostic efficiency of MPV in the diagnostic workup for ACS.

Materials and Methods: After thorough evaluation of 215 eligible patients, 3 ml. Venous blood collected using Becton, Dickinson and company vacutainer and MPV measured within 1-2 hr of

sample collection. Sample for cTn I collected at 6 hr and at 12 hrs, if required and level measured using Biosite analyzer.

Results: Mean platelet volume (MPV) was found to be higher among ACS patients as compared to non ACS, 11.44 ± 1.23 vs 9.91 ± 1.27 fl (p -value < 0.001). The NPV of MPV in the diagnostic workup of chest pain suggestive of ACS within 6 hours of presentation were found to be 82.53% .

Conclusion: In this study the MPV is significantly higher in patients with ACS than in those with chest pain of non-cardiac origin and its negative predictive value of 82.53%, it might be useful as an assisting rule-out test in conjunction with other markers in the early prediction of the risk of ACS.

Keywords: Acute coronary syndromes, Cardiac troponin I, Mean platelet volume

INTRODUCTION

Acute coronary syndrome (ACS) is becoming the leading cause of morbidity and mortality in developing countries like India too. The spectrum of presentation is wide from unstable angina to acute myocardial infarction [1]. Previous data suggests that only one fifth of chest pain cases require emergency care and hospitalization but in absence of segregation of these cases at the beginning, physicians over-admit such patients [2]. It burns out the precious resources of a resource poor public setups. Further it may reduce the quality of care for those who actually require it. Consensus guidelines on a universal definition of myocardial infarction have been issued recently by the International Federation of Clinical Biochemistry [3], European Society of Cardiology, the American College of Cardiology, and the American Heart Association and the World Heart Federation [4] that recommend cardiac troponin I (cTnI) and cardiac troponin T (cTnT) measurements as the preferred biochemical cardiac biomarkers for diagnosing ACS. However, the diagnostic efficiency of cardiac troponins within 2 to 4 hours of the symptom onset is limited [5]. Therefore, other laboratory biochemical tests that successfully reduce emergency department delays in provision of immediate care for cardiac pain patients are required in conjunction with established markers [6]. Platelets play a crucial role in the pathogenesis of atherosclerosis and thrombus formation after coronary plaque rupture [1]. Platelet activation leads to the formation of free arachidonic acid, which can be transformed into prostaglandins, such as thromboxane A₂, one of the most potent vasoconstricting and platelet-aggregating substances, or into leukotrienes, which can amplify the acute inflammatory response. Consequently, larger and hyperactive platelets play a pivotal role in accelerating the formation and propagation of intracoronary thrombus, leading to the occurrence of acute thrombotic events [7]. These observations have led to the hypothesis that increased mean platelet volume (MPV) may be a potentially useful predictor

in cardiovascular risk stratification [8]. As MPV is an index of platelet size that correlates with platelet activation. In patients with non-ST elevation ACS, it has been shown that higher MPV indicates not only an increased risk of non-STEMI, but also ischemic complications [9]. Other investigators have demonstrated in small observational studies that MPV is higher in patients with myocardial infarction than in those with stable angina pectoris and in healthy controls, suggesting that MPV is a risk factor for the severity of coronary artery disease [10].

MATERIALS AND METHODS

This hospital based observational, descriptive, comparative study was done during January 2013 to September 2013. There were 232 eligible patients (< 6 hours of chest pain) out of all 1160 chest pain attended the Cardiology OPD/ Emergency during the study period. The study protocol was approved by the Clinical Trial Screening and the Ethics Committee of the hospital, and written informed consent was obtained from the patients. All subjects were subjected to detailed history, physical examination and relevant investigations. Venous sample collected (within 6 hrs of chest pain) for routine hematological testing in 3 ml BD vacutainer containing K₂ EDTA 5.4 mg and MPV measured within 1-2 hrs of sample collection using SYSMEX 4000 I analyzer. Sample for Trop I collected at 6 hr and at 12 hr if required and level measured using Triage pro(Biosite) analyzer (cTrop- I level > 0.01 ng/ml). All patients underwent 12 lead ECG and interpreted according to conventional criteria. Total 232 subjects were recruited, out of which 110 were confirmed ACS and 122 were non ACS. 6 patients from ACS group and 11 patients from non ACS group were excluded because the value of MPV was not available. Finally 104 patients in ACS group and 111 patients in non ACS group were analyzed. ACS was diagnosed based on the presence of either of the criteria: 1) detection of rise in cardiac biomarker Trop I > 0.01 for acute myocardial infarction. 2) For

Profile of cases	ACS [n=104]	NON ACS [n=111]
Age mean±SD	55.09 ± 11.13 Yrs	43.04 ± 9.44 Yrs
Gender	M-82 F- 22	M-88, F-23
Diabetes Mellitus	25[24.03%]	7[6.30%]
Hypertension	39[37.50%]	24[21.61%]
Smoking	81[77.88%]	47[42.34%]
Dyslipidmia	40[38.46%]	16[14.41%]
Obesity	10[9.61%]	9[8.10%]
Family History	13[12.50%]	14[12.61%]

ACS= Acute coronary syndrome

[Table/Fig-1]: Clinical profile of study population

	ACS	NON ACS	p-value (student's t test)
Mean MPV±SD	11.44±1.23	9.914±1.275	<0.001

[Table/Fig-2]: MPV in Patients with ACS vs NON ACS

MPV	ACS [n=104]	NON ACS [n=111]
Positive (>9.8)	93	59
Negative(<9.8)	11	52

MPV=Mean platelet volume in fl.
Sensitivity: TP/TP+FN = 89.42%
Specificity: TN/TN+FP = 46.84%
Positive Predictive Value: TP/TP+FP = 61.18%
Negative Predictive Value: TN/TN+FN = 82.53%

[Table/Fig-3]: MPV in ACS vs Non ACS

	Variables	B	S.E.	Wald	df	Sig.	Exp(B)	95.0% C.I. for EXP(B)	
								Lower	Upper
Step 1 ^a	Age	.027	.021	1.617	1	.203	1.027	.986	1.070
	SEX(1)	.953	.674	1.999	1	.157	2.594	.692	9.723
	HTN(1)	-.934	.538	3.012	1	.083	.393	.137	1.128
	SMO(1)	.487	.623	.611	1	.434	1.627	.480	5.515
	DM(1)	-.292	.608	.230	1	.631	.747	.227	2.458
	DYSLIP(1)	.024	.498	.002	1	.961	1.025	.386	2.719
	OBE(1)	.819	.751	1.192	1	.275	2.269	.521	9.880
	FH(1)	-.713	.719	.983	1	.321	.490	.120	2.006
	ECG(1)	-5.467	1.078	25.719	1	.000	.004	.001	.035
	MPV	.201	.090	4.964	1	.026	1.222	1.024	1.458
	Constant	-2.993	1.973	2.301	1	.129	.050		

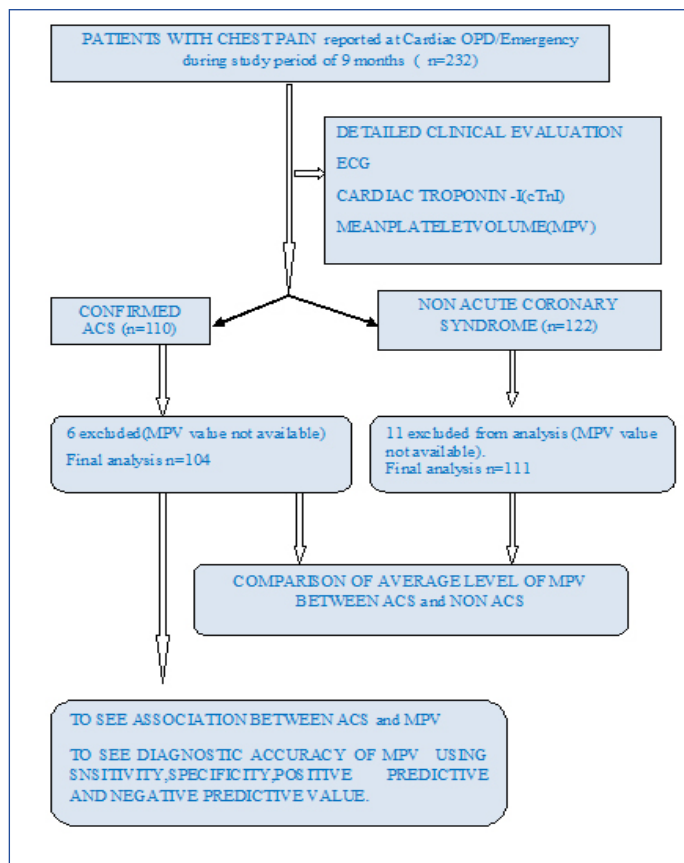
a. Variable(s) entered on step 1: age, sex, HTN=Hypertension, SMO= Smoking, DM=Diabetes mellitus, DYSLIP= Dyslipidemia, OBE=Obesity, FH=Family history, ECG=Electrocardiography, MPV=Mean platelet volume, SE=standard error.

[Table/Fig-4]: Logistic regression analysis

unstable angina where Trop I is < 0.01 , with at least one of the following four a) typical symptoms of ischemia b) ECG changes indicative of new ischemia c) development of pathological Q wave in the ECG d) Echocardiographic evidence of new regional wall motion abnormality. Non ACS group subjects were diagnosed based on atypical symptoms, no ECG evidence of ischemia, negative cTropI, no Echo evidence of RWMA, negative TMT if required and normal coronary angiogram in some patients [11].

Exclusion Criteria

Patients with chest pain of > 6 hours, Critically ill patients (ACS associated with renal failure, hepatic failure, myeloproliferative disorder or malignancy), patients having any platelet disorder as thrombocytopenia or thrombocytosis, patients with any bleeding or clotting disorder and patients on antiplatelet therapy.



[Table/Fig-5]: Study Population

STATISTICAL ANALYSIS

The data were entered on excel sheet and analyzed using Microsoft excel. Quantitative data were summarized in the form of mean and standard deviation. The difference in average MPV value among ACS and non ACS cases were evaluated using student's t test. There was a significant difference in MPV levels in both groups. The logistic regression was done to find out the independent predictors for ACS using multiple variables. A test of the full model was statistically significant, indicating that the predictors as a set reliably distinguished between ACS and non cardiac chest pain (Chi square = 150.654 p < .0001 with df = 10). Also Hosmer and Lemeshow Test show a good fit by high p value (0.949) and low Chi-square value (2.746). The level of significance was kept 95% for all statistical purpose. The diagnostic efficacy of MPV was evaluated and sensitivity, specificity, positive predictive value and negative predictive value were found out.

RESULTS

Two hundred fifteen subjects comprising of 104 ACS patients and 111 non cardiac chest pain (non ACS) group were included in the present study. Demographic characteristics of patients shown in [Table/Fig-1]. As shown in [Table/Fig-2], Mean platelet volume (MPV) was found to be higher among ACS patients as compared to non ACS patients which is statistically significant (11.44 ± 1.23 vs 9.91 ± 1.27 fl, p -value < 0.001).

EXP(B) value in logistic regression indicates that when MPV raised by one unit the odd's ratio is 1.22 times as large and therefore patient has 1.2 times more likely to have cardiac chest pain. The diagnostic efficacy of MPV was evaluated and sensitivity (89.42%), specificity (46.84%), positive predictive value (61.18%) and negative predictive value (82.53%) were found out [Table/Fig-3,4].

DISCUSSION

Coronary artery disease is the most important cause of mortality and morbidity in industrialized as well as in developing countries. Both endogenous and exogenous risk factors such as smoking, hypercholesterolemia, DM, and hypertension increase the risk of ACS [12]. Nevertheless, these risk factors accounts for only a part of ACS cases [13].

Therefore, it is needed to identify other related risk factors so as to predict individual risk in the development of ACS. By leading to the formation and dissemination of intracoronary thrombus, larger and hyperactive platelets may accelerate the emergence of clinical picture called as acute coronary syndrome. Platelet function is strongly associated with atherogenesis and atherothrombosis — processes important in pathogenesis of cardiovascular diseases [14]. MPV is a parameter which states platelet size and indirectly proves its activity. It is known that larger platelets are more reactive due to higher concentration of active substances in microgranules (e.g. thromboxane A2 and B2, platelet factor 4, P-selectin, platelet-derived growth factor) and expression of adhesive receptors (glycoprotein IIb/IIIa) [15]. Furthermore, increased MPV values are associated with shortened bleeding time [16]. MPV is considered a useful prognostic marker of cardiovascular risk [15,17,18]. In general population, higher MPV value is associated with increased occurrence of myocardial infarction (MI) [16]. Klovaite et al. found that in general Danish population the risk of MI has increased by 38% in individuals with MPV 7.4 vs. < 7.4 fl independently of known cardiovascular risk factors [19]. Increased MPV has been discussed recently as a predictor of death in patients with ACS, but the cut-off point of MPV in relation to poor prognosis has not been estimated so far [16, 18].

In our study, we examined the platelet volume of our cases, which we think to be likely a risk factor for ACS [Table/Fig-5]. While a number of studies established an association between MPV and coronary artery disease or MI formation; some other studies suggested that there was no such association [19, 20].

Endler et al., in their study where they compared AMI patients to those with stable AP, found MPV to be increased [21]. They also suggested that increased MPV was an indicator for larger and more active platelets and an independent risk factor for MI in coronary artery disease. Likewise, Park et al., also considered increased MPV to be a risk factor for platelet activation [22]. Martin et al, in their study, suggested that increased MPV might be an independent risk factor for post-MI recurrence of coronary events and mortality [8]. In the study where they compared unstable angina pectoris and MI patients, Mathur et al. found platelet counts to be significantly lower and MPV to be higher in patients with unstable angina pectoris [23].

In the study consisting of 518 chronic hemodialysis patients with concurrent coronary artery disease, Hening et al., concluded that high MPV might be associated with coronary heart disease in hemodialysed patients [24]. In that study, they also detected that

MPV was higher in unstable angina pectoris subjects who required emergent angioplasty, compared to the rest of unstable angina pectoris patients. These findings rendered them to claim that platelets of larger volume contributed to the formation of thrombus in coronary arteries.

There was no significant difference found between unstable angina pectoris and control arms in terms of MPV, in the study consisted of 54 patients with unstable angina pectoris performed by Butkiewicz and his colleagues [20]. We detected that MPV was significantly higher in ACS group vs. non ACS group, and the PPV, NPV were 61.18% & 82.53% respectively. Based on these findings, we have concluded that larger platelet volumes may constitute a high risk for acute coronary syndrome.

For this purpose, we think that MPV measurement, which is a non-invasive and easy-to-perform method, may be an important tool for the discriminating ACS patients from noncardiac chest pain. Nonetheless, conflicting results of other studies make this issue controversial, which warrants performing of more comprehensive studies in future.

CONCLUSION

MPV is a simple and economic laboratory measurement (costless when a complete blood count is requested), and owing to its negative predictive value of 82.53%, we suggest that it might be useful as an assisting rule-out test in conjunction with other conventional biochemical cardiac markers in the early prediction of the risk of ACS in patients admitted to the emergency department. It should be substantiated with further studies.

STUDY LIMITATION

Patients with non-cardiac chest pain (atypical symptoms) might have unstable angina in the absence of electrocardiography changes and cardiac troponin positivity, have resulted in selection bias. The absence of coronary angiographic findings might be a limitation in this study.

REFERENCES

- [1] Ross R. Atherosclerosis: an inflammatory disease. *N Engl J Med.* 1999;340: 115–26.
- [2] Lippi G, Montagnana M, Salvagno GL, Guidi GC. Potential value for new diagnostic markers in the early 1 recognition of acute coronary syndromes. *CJEM.* 2006;8:27–31.
- [3] Panteghini M, Apple FS, Christenson RH, Dati F, Mair J, Wu AH. Use of biochemical markers in acute coronary syndromes. IFCC Scientific Division, Committee on Standardization of Markers of Cardiac Damage. International Federation of Clinical Chemistry. *Clin Chem Lab Med.* 1999;37:687–93.
- [4] Thygesen K, Alpert JS, White HD. Joint ESC/ACCF/AHA/WHF Task Force for the Redefinition of Myocardial Infarction. Universal definition of myocardial infarction. *J Am Coll Cardiol.* 2007;50:2173–95.
- [5] Apple FS, Wu AH. Myocardial infarction redefined: role of cardiac troponin testing. *Clin Chem.* 2001;47:377–79.
- [6] Bayley MD, Schwartz JS, Shofer FS, et al. The financial burden of emergency department congestion and hospital crowding for chest pain patients awaiting admission. *Ann Emerg Med.* 2005;45:110–17.
- [7] Senaran H, Ileri M, Altinbas, A, et al. Thrombopoietin and mean platelet volume in coronary artery disease. *Clin Cardiol.* 2001;24:405–08.
- [8] Martin JF, Bath PM, Burr ML. Influence of platelet size on outcome after MI. *Lancet.* 1991;338:1409–11.
- [9] Yilmaz MB, Cihan G, Guray Y, et al. Role of mean platelet volume in triaging acute coronary syndromes. *J Thromb Thrombolysis.* 2008; 26(1):49–54.
- [10] Kiliçli-Camur N, Demirtunc, R, Konuralp C, et al. Could mean platelet volume be a predictive marker for acute myocardial infarction. *Med Sci Monit.* 2005;11:CR387–92.
- [11] Anderson JL, Adams CD, Antman EM, et al. ACC/AHA 2007 guidelines for the management of patients with unstable angina/non ST-elevation myocardial infarction: A report of the American College of Cardiology/American Heart Association Task Force on Practice Guidelines (Writing Committee to Revise the 2002 Guidelines for the Management of Patients With Unstable Angina/Non ST-Elevation Myocardial Infarction): Developed in collaboration with the American College of Emergency Physicians, the Society for Cardiovascular Angiography and Interventions, and the Society of Thoracic Surgeons: Endorsed by the American Association of Cardiovascular and Pulmonary Rehabilitation and the Society for Academic Emergency Medicine. *Circulation* 2007; 116:e148.
- [12] McKarns SC, Smith CJ, Payne VM, Doolittle DJ. Blood parameters associated with atherogenic and thrombogenic risk in smokers and nonsmokers with similar life-styles. *Mod Pathol.* 1995; 8:434-40.

- [13] Koenig W. Epidemiology of coronary heart disease. *Z Kardiol.* 1998; 87:3-7.
- [14] Davi G, Patrono C. Platelet activation and atherothrombosis. *N Engl J Med.* 2007; 357: 2482-94.
- [15] Chu SG, Berger RC, Bhatt DL, et al. Mean platelet volume as a predictor of cardiovascular risk: A systematic review and meta-analysis. *J Thromb Haemost.* 2010; 8: 148-56.
- [16] Maden O, Kacmaz F, Selcuk H, et al. Relationship of admission hematological indexes with myocardial reperfusion abnormalities in acute ST segment elevation myocardial infarction patients treated with primary percutaneous coronary interventions. *Can J Cardiol.* 2009; 25: e164-68.
- [17] Vizioli L, Muscari S, Muscari A. The relationship of mean platelet volume with the risk and prognosis of cardiovascular diseases. *Int J Clin Pract.* 2009; 63: 1509-15.
- [18] Slavka G, Perkmann T, Haslacher Hm, et al. Mean platelet volume may represent a predictive parameter for overall vascular mortality and ischemic heart disease. *Arterioscler Thromb Vasc Biol.* 2011; 31: 1215-18.
- [19] Klovaite J, Benn M, Yazdanyar S, Nordestgaard BG. High platelet volume and increased risk of myocardial infarction: 39 531 participants from the general population. *J Thromb Haemost.* 2011; 9: 49-56.
- [20] Butkiewicz AM, Kemon H, Dymicka-Piekarska V, Bychowski J. Beta-thromboglobulin and platelets in unstable angina. *Kardiol Pol.* 2003; 58:449-55.
- [21] Endler G, Klimesch A, Sunder-Plassmann H, Schillinger M, Exner M, Mannhalter C, et al. Mean platelet volume is an independent risk factor for myocardial infarction but not for coronary artery disease. *Br. J. Haematol.* 2002; 117:399-404.
- [22] Park Y, Schoene N, Harris W. Mean platelet volume as an indicator of platelet activation: methodological issues. *Platelets.* 2002; 13.
- [23] Mathur A, Robinson MS, Cotton J, Martin JF, Erusalimsky JD. Platelet reactivity in acute coronary syndromes: evidence for differences in platelet behaviour between unstable angina and myocardial infarction. *Thrombosis and Haemostasis.* 2001; 85:989-94.
- [24] Henning BF, Zidek W, Linder B, Tepel M. Mean platelet volume and coronary heart disease in hemodialysis patients. *Kidney Blood Press Res.* 2002; 25:103-08.

PARTICULARS OF CONTRIBUTORS:

1. Senior Cardiologist, Department of Cardiology, SMS Medical College, Jaipur, Rajasthan, India.
2. Professor, Department of Cardiology, SMS Medical College, Jaipur, Rajasthan, India.
3. Associate Professor, Department of Pathology, SMS Medical College, Jaipur, Rajasthan, India.
4. Associate Professor, Department of Community Medicine, SMS Medical College, Jaipur, Rajasthan, India.
5. Senior Pathologist, Department of Pathology, SMS Medical College, Jaipur, Rajasthan, India.

NAME, ADDRESS, E-MAIL ID OF THE CORRESPONDING AUTHOR:

Dr. Randheer Pal,
C/o Sharvan Gurjar A-1, Pratap Nagar, Shastri Nagar, Jaipur, Rajasthan, India.
Phone: 09660245770, E-mail: randheerpal@gmail.com

FINANCIAL OR OTHER COMPETING INTERESTS: None.

Date of Submission: **Jan 01, 2014**

Date of Peer Review: **Mar 28, 2014**

Date of Acceptance: **May 06, 2014**

Date of Publishing: **Aug 20, 2014**