

Nine-Months Clinical Outcome of Biodegradable Polymer Coated Sirolimus-eluting Stent System: A Multi-Centre “Real-World” Experience

RAGHAV SARMA¹, JAYESH PRAJAPATI², ASIF RAHEEM³, KAMLESH THAKKAR⁴, SHIVANI KOTHARI⁵, ASHOK THAKKAR⁶

ABSTRACT

Background: The main culprit in first-generation drug eluting stents is ‘durable’ polymer, whose continuous presence may impair arterial healing and ultimately have a negative impact on late outcomes. The main enigma behind the biodegradable polymer usage is its degradation after elution of drug. This reduces adverse events in unselected patients with complex coronary artery lesions treated with biodegradable polymer coated sirolimus-eluting stents.

Aim: The aim of the INDOLIMUS-G Registry was to evaluate safety and efficacy of the Indolimus (Sahajanand Medical Technologies Pvt. Ltd., Surat, India) sirolimus-eluting stents in large cohorts of unselected patients with complex coronary artery lesions.

Materials and Methods: It is a multi-centre, non-randomized retrospective registry with a clear aim of evaluating safety and efficacy of the Indolimus sirolimus-eluting stents in consecutive patients enrolled between April 2012 and May 2014. The primary end-point of the study was major adverse cardiac events (MACE), which is a composite of cardiac death, myocardial infarction (MI), target lesion revascularization (TLR), target vessel revascularization (TVR) and stent thrombosis (ST) at the end of follow-up. Clinical

follow-up were scheduled at the end of 30-days, 6-months, and 9-months period.

Results: The mean age of enrolled patients was 52.6 ± 11.0 years. A total of 1137 lesions were intervened successfully with 1242 stents (1.09 ± 0.30 stent per lesion). The average stent length and diameter was 27.42 ± 9.01 mm and 3.12 ± 0.36 mm respectively. There were 740 (73.40%) male patients, indicating their high prevalence. Diabetes, hypertension and totally occluded lesions were found in 372 (36.90%), 408 (40.47%) and 170 (16.86%) patients, respectively. This showed that study also included high risk complex lesions and not ideal recruited lesions. The incidence of MACE at 30-days, 6-months and 9-months were 3 (0.30%), 18 (1.80%) and 22 (2.20%) respectively. At 9-months, TLR was found in 6 (0.50%) patients. There were 2 (0.20%) cases of ST, 10 (1.0%) cases of MI and 4 (0.40%) cases of cardiac death at 9-month follow-up.

Conclusion: The lower incidence of MACE, TLR and ST at 9-month follow-up clearly delineates safety and efficacy of Indolimus SES in large cohorts of unselected patients with complex coronary lesions.

Keywords: Coronary artery lesion, Drug eluting stents, Percutaneous coronary intervention

INTRODUCTION

In the arena of global health concern, cardiovascular problems pose a major threat to the society. The renaissance from balloon angioplasty to implantation of coronary stents has revolutionized the whole idea of safety and efficacy [1,2]. But, then again, the use of stents did not completely avoided restenosis and the frequency of restenosis persisted more than 30% in several subgroups [3-5]. This germinated the necessity for drug eluting stents (DES). First generation DES, with durable polymers, considerably negotiated the rates of revascularization as compared to bare metal stents (BMS) [6,7]. But, the utilization of non-biodegradable polymer in the first generation DES negatively affects its long term outcomes. The presence of polymer even after the drug has been eluted instigates local inflammatory reaction and delays healing of affected arteries [8]. This act as an Achilles heel and contributes to late thrombosis [9-11].

The use of biodegradable polymer in new generation DES enhances its long term safety and efficacy. The biodegradable polymer would soon degrade after drug has been eluted. This would reduce local inflammatory reaction and irritation leaving only a metal stent in adhesion with neointima and endothelium.

The Indolimus (Sahajanand Medical Technologies Pvt. Ltd., Surat, India) employs L605 cobalt chromium alloy as its stent platform. The metal stent is coated with biodegradable polymer to deliver sirolimus. The biodegradable polymer undergoes degradation in 9-12 months leaving only a metal stent along the arterial wall. Theoretically, it seems to improve arterial compliance and reduced

need for prolonged antiplatelet therapy. But practically, there are still some queries relating to short and long-term safety and efficacy of sirolimus-eluting DES.

Thus, the main aim of this multi-centre, non-randomized, retrospective registry was to evaluate 9-months safety and efficacy of the Indolimus sirolimus-eluting stents in unselected consequent patients with complex coronary lesions.

MATERIALS AND METHODS

Study Design

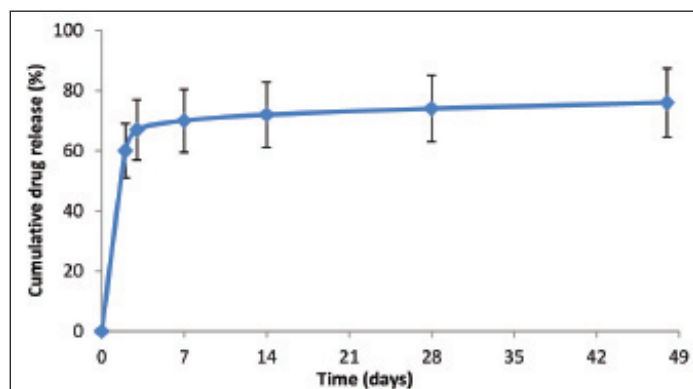
The INDOLIMUS-G is a multi-centre, non-randomized retrospective registry with a clear aim of evaluating safety and efficacy of Indolimus sirolimus-eluting stents in consecutive patients enrolled between April 2012 and May 2014. Various demographic, procedural and lesion characteristics and clinical follow-up data were collected for 1008 patients in whom study stent was implanted. The study was conducted in compliance with Declaration of Helsinki and was approved by institutional ethics committee. A signed informed consent was also obtained from each enrolled patients.

Study Population

The inclusion criteria for the study were: 1) patients of age 18 years or above; 2) patients who had stable or unstable angina or acute recent myocardial infarction and; 3) patients who were undergoing coronary intervention with the study stent. The patients were excluded if they refused to give written informed consent or if they had any allergy to aspirin, clopidogrel, ticlopidine, heparin, cobalt chromium, sirolimus or polymers used in a study stent.

Description of the Study Stent

The Indolimus biodegradable polymer coated sirolimus-eluting coronary stent (Sahajanand Medical Technologies Pvt. Ltd., Surat, India) has a strut thickness of 60 µm and drug load of 1.4µg/mm². It involves L605 cobalt chromium (Co-Cr) alloy as its stent platform. Initially, 70% of drug is released within 7 days and remaining drug is released over a period of 48 days [Table/Fig-1]. The drug is released within 7 weeks after the stent implantation from the polymeric layers coated onto the surface of the stent. The biodegradable polymeric film is a blend of different biodegradable polymers- poly L-lactide, 50/50 poly DL-lactide-co-glycolide and polyvinyl pyrrolidone, which undergoes hydrolysis. This process takes approximately 9 to 12 months after which all the polymer degrades naturally and excretes from body in the form of their metabolites.



[Table/Fig-1]: In-vitro drug release from the Indolimus stent

The average coating thickness of Indolimus stent is between 5 to 6 µm. The Indolimus stent is available in lengths of 8, 12, 16, 20, 24, 28, 32, 36 and 40 mm and available diameters were 2.5, 2.75, 3.0 and 3.5 mm.

Interventional Procedure and Adjunctive Medication

All patients received a loading dose of 300 mg of aspirin and clopidogrel (300 mg) or prasugrel (60 mg) or ticagrelor (90 gm). The procedural anticoagulation was achieved either with heparin or bivalirudin. However, the intra-procedural administration of glycoprotein IIb/IIIa-inhibitor was at the investigator's discretion. The procedure was performed according to the standard treatment guidelines of each participating centre. All the patients received dual antiplatelet therapy (aspirin 75-300 mg/daily indefinitely and clopidogrel 75 mg/daily or prasugrel 10 mg/daily or ticagrelor 90 mg twice daily for at least 6 months) after the procedure.

Endpoints of the Study

The primary end-point of the study was major adverse cardiac events (MACE), which is a conglomeration of cardiac death, myocardial infarction (MI) (Q-wave and non-Q-wave), target lesion revascularization (TLR), target vessel revascularization (TVR) and stent thrombosis (ST). These end-points were observed at 30-days, 6-months and 9-months follow-up. The secondary endpoints will be measured at 12 and 24 months and yearly thereafter for five years.

Definition of Endpoints and Clinical Events

Procedural success was defined in terms of in-hospital MACE. MACE is composed of cardiac death, MI, TLR and TVR. Death can be cardiac or non-cardiac death. Any death due to undetermined cause was reported as cardiac death. Q-wave MI was considered when there was development of new Q-wave of more than 0.04 seconds in two or more adjoining leads along with increase in cardiac markers like Troponin I or T, creatine kinase or MB isoform.

Non Q-wave MI was considered when there was more than three times elevation in creatinine kinase levels along with elevation in MB isoform and Troponin markers T or I without development of new Q-waves. Target lesion revascularization was considered when there was stenosis in treated segment (5mm proximal and 5mm distal edges) [12]. Target vessel revascularization was considered when there was stenosis in any segment of the treated vessel. Stent thrombosis (ST) was categorized according to Academic Research Consortium (ARC). It was considered acute when it occurred within 24 hours, sub acute when it occurred between 1 and 30 days and late when it occurred after 30 days. The 'definite' stent thrombosis was counted when it was detected angiographically. If the patient had a target vessel-related MI or died of a coronary event, it was "probable", and "possible" if any unexplained death occurred from 30 days after intracoronary stenting.

Follow-Up

Clinical follow-up, by telephonic conversation were scheduled at 30-days (± 7 days window period), 6-months (±15days window period) and 9-months (±30days window period). Follow-up data were collected pertaining to current clinical status, prior hospitalisation and occurrence of any of the aforementioned adverse events.

STATISTICAL ANALYSIS

Continuous variables are presented as mean ± standard deviation and categorical variables as counts and percentages. The event free survival curve was calculated according to the Kaplan-Meier method. All data were analysed using the Statistical Package for Social Sciences (SPSS; Chicago, IL, USA) program, version 15.

RESULTS

Baseline Demographics and Lesion Characteristics

A total of 1008 patients were enrolled in the study. The basic demographic details of the patients are outlined in [Table/Fig-2]. The mean age was found to be 52.6 ± 11.0 years. Out of total patients, 740 (73.4%) were male, 372 (36.9%) had a history of diabetes mellitus and 408 (40.5%) had history of hypertension. A total of 1137 lesions were intervened successfully with 1242 stents (1.09 ± 0.30 per lesion). The average stent length and diameter were 27.42 ± 9.01 mm and 3.12 ± 0.36 mm respectively. According to ACC/AHA classification, there were 491 (43.2%) type B lesions, 604 (53.1%) type C lesions and 170 (16.9%) totally occluded lesions. The lesion and angiographic procedural details are outlined in [Table/Fig-3].

Characteristics	Indolimus SES n = 1008 patients
Age (mean ± SD, yrs)	52.6 ± 11.0
Male, n (%)	740 (73.4%)
Diabetes mellitus, n (%)	372 (36.9%)
Hypertension, n (%)	408 (40.5%)
Hypercholesterolemia, n (%)	68 (6.7%)
Smoker, n (%)	237 (23.5%)
Previous stroke, n (%)	17 (1.7%)
Previous MI, n (%)	115 (11.4%)
Primary PCI, n (%)	166 (16.5%)

[Table/Fig-2]: Baseline demographic characteristics
SES- sirolimus-eluting stent, MI-myocardial infarction, PCI-percutaneous coronary intervention

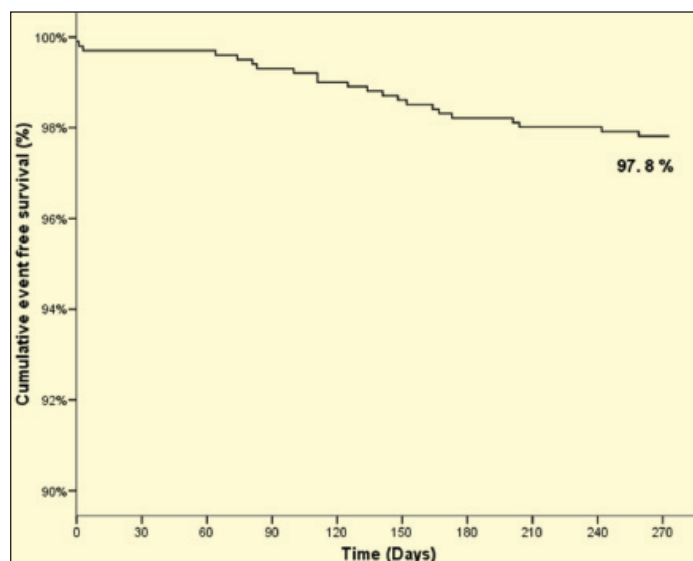
Clinical Outcomes

The incidence of MACE at 30-days, 6-months, and 9-months was found to be 3 (0.30%), 18 (1.80%) and 22 (2.20%) respectively. The cumulative event free survival by Kaplan Meier method was found to be 97.8%. The detailed clinical outcomes of the study are outlined

in [Table/Fig-4,5]. Long term follow-up of the study would further confirm safety and efficacy.

Characteristics	Patients = 1008 / Lesions = 1137
Lesion location	
Left anterior descending, n (%)	510 (44.9%)
Right coronary artery, n (%)	386 (33.9%)
Left circumflex, n (%)	239 (21.0%)
Left main, n (%)	2 (0.20%)
ACC/AHA lesion classification	
A, n (%)	42 (3.7%)
B1, n (%)	149 (13.1%)
B2, n (%)	342 (30.1%)
C, n (%)	604 (53.1%)
No. of diseased vessels	
Single vessel disease, n (%)	687 (68.2%)
Double vessel disease, n (%)	286 (28.4%)
Triple vessel disease, n (%)	35 (3.5%)
Total occlusion, n (%)	170 (16.9%)
Total no. of stent	N = 1242
No. of stents per patient, (mean ± SD, mm)	1.23 ± 0.5
Average stent length, (mean ± SD, mm)	27.42 ± 9.0
Average stent diameter, (mean ± SD, mm)	3.12 ± 0.36

[Table/Fig-3]: Lesion and procedural characteristics
ACC/AHA- American College of Cardiology/ American Heart Association



[Table/Fig-4]: Cumulative event-free survival curve at 9-month follow-up

DISCUSSION

The introduction of drug eluting stents has been a breakthrough discovery in the field of interventional cardiology. There was a steep decrease in the rates of restenosis and revascularization with DES as compared to BMS [6,13,14]. Metaphorically, Newton's law of motion, 'For every action there is an equal and opposite reaction', applies here also. After initial enthusiasm, there have been questions regarding long term safety of DES due to its potential for increased risk of stent thrombosis. The persistent presence of durable polymer, even after elution of drug, instigates local inflammatory reaction and delayed arterial healing leading to late stent thrombosis. The continuous efforts of researchers to achieve better than the best, emerged as biodegradable polymer coated drug eluting stents.

Our results demonstrate that at the end of 6-months, the Indolimus SES was associated with ST rates as low as 0.2%. Amid the fireworks, there lies skepticism whether the decrease in throm-

Events	30-days follow-up (n=1008)	6-months follow-up (n=998)	9-months follow-up (n=998)
Death, n (%)	3 (0.30%)	4 (0.40%)	4 (0.40%)
Cardiac death, n (%)	3 (0.30%)	4 (0.40%)	4 (0.40%)
Non-cardiac death, n (%)	0 (0%)	0 (0%)	0 (0%)
Myocardial infarction, n (%)	0 (0%)	7 (0.70%)	10 (1.0%)
Q-wave, n (%)	0 (0%)	3 (0.30%)	4 (0.40%)
Non Q-wave, n (%)	0 (0%)	4 (0.40%)	6 (0.60%)
TLR, n (%)	0 (0%)	5 (0.50%)	6 (0.60%)
TVR, n (%)	0 (0%)	0 (0%)	0 (0%)
ST, n (%)	0 (0%)	2 (0.20%)	2 (0.20%)
Definite, n (%)	0 (0%)	0 (0%)	0 (0%)
Probable, n (%)	0 (0%)	2 (0.20%)	2 (0.20%)
Total MACE	3 (0.30%)	18 (1.80%)	22 (2.20%)

[Table/Fig-5]: Cumulative major adverse cardiac events at 30-days, 6-months and 9-months follow-up
TVR - target vessel revascularization; TLR - target lesion revascularization, ST - stent thrombosis

bogenic potential is solely because of biodegradable polymer usage or not. A new concept on ST proposed by Kolandaivelu et al., explains using an ex-vivo model that strut thickness, geometry and optimal positioning, along with biodegradable polymer usage are critical factors in reducing thrombosis risk [15].

Indolimus, which is a biodegradable polymer coated sirolimus-eluting stent, has a strut thickness of 60 µm. This low-profile stent with cobalt-chromium stent platform has serpentine struts for homogenous stress distribution upon expansion. This unique design provides optimum radial strength and trackability. In vivo stent recoil assessment of one of the stent, similar to Indolimus in characteristics and design, revealed that acute stent recoil has higher radial strength compared to other available stents [16].

The Indolimus registry, which is a post-marketing surveillance registry of Indolimus SES, demonstrated favourable outcomes at 6-months follow-up [17]. The incidence of MACE was found to be 3.40%, which is a composite of 13 (2.45%) cases of cardiac death and 2 cases of (0.38%) myocardial infarction. Similar reproducible results are obtained in this multi-centre 9-months study. At 9-month, the occurrence of MACE was 2.20%, which is composite of 4 (0.40%) cases of cardiac death, 10 (0.90%) cases of myocardial infarction and 6 (0.50%) cases of TLR and 2 (0.20%) cases of ST.

In another registry, which aimed at evaluating safety and efficacy of biodegradable polymer coated SES, MACE was found to be 12 (2.1%) with TLR as low as 3 (0.5%) at 6-months follow-up [18]. The results of our study are quite comparable with this registry and delineate safety and efficacy of the Indolimus.

The current state-of-art in interventional cardiology suggests that any new emerging stents will require enormous efforts to prove its superiority (or even non-inferiority) and establish safety and efficacy. More complex lesions, larger population size and longer follow-ups have become mandatory [19]. The INDLOIMUS - G enrolling large cohorts of unselected patients undergoing PCI, involves patients at high risk and complex coronary lesions (36.9% DM, 16.5% primary PCI and 15% CTO).

Thus, it is evident that combination of stent geometry, thin strut, and biodegradable polymer usage has contributed to excellent clinical performance of the Indolimus SES. But it is also evident that expected potential of biodegradable polymer can emerge only after long-term follow-up, after complete absorption of biodegradable polymer. So, long-term follow-up study would further demonstrate prolonged safety and efficacy of the Indolimus SES.

STUDY LIMITATION

The main limitation of the study is that it was a single-arm, non-randomized study.

CONCLUSION

The use of Indolimus is associated with lower incidence of TLR, ST and consequent MACE. Thus, the INDOLIMUS - G Registry gives an idea about favourable safety, efficacy and clinical performance of the Indolimus in large cohorts of unselected patients with complex coronary artery lesions.

REFERENCES

- [1] Serruys PW, de Jaegere P, Kiemeneij F, Macaya C, Rutsch W, Heyndrickx G, et al. A comparison of balloon-expandable-stent implantation with balloon angioplasty in patients with coronary artery disease. *New England Journal of Medicine*. 1994;331(8):489-95.
- [2] Kimura T, Yokoi H, Nakagawa Y, Tamura T, Kaburagi S, Sawada Y, et al. Three-year follow-up after implantation of metallic coronary-artery stents. *New England Journal of Medicine*. 1996;334(9):561-67.
- [3] Elezi S, Kastrati A, Neumann F-J, Hadamitzky M, Dirschinger J, Schömig A. Vessel size and long-term outcome after coronary stent placement. *Circulation*. 1998;98(18):1875-80.
- [4] Kobayashi Y, De Gregorio J, Kobayashi N, Akiyama T, Reimers B, Finci L, et al. Stented segment length as an independent predictor of restenosis. *Journal of the American College of Cardiology*. 1999;34(3):651-59.
- [5] Elezi S, Kastrati A, Pache J, Wehinger A, Hadamitzky M, Dirschinger J, et al. Diabetes mellitus and the clinical and angiographic outcome after coronary stent placement. *Journal of the American College of Cardiology*. 1998;32(7):1866-73.
- [6] Moses JW, Leon MB, Popma JJ, Fitzgerald PJ, Holmes DR, O'Shaughnessy C, et al. Sirolimus-eluting stents versus standard stents in patients with stenosis in a native coronary artery. *New England Journal of Medicine*. 2003;349(14):1315-23.
- [7] Babapulle MN, Joseph L, Bélisle P, Brophy JM, Eisenberg MJ. A hierarchical Bayesian meta-analysis of randomised clinical trials of drug-eluting stents. *The Lancet*. 2004;364(9434):583-91.
- [8] Joner M, Finn AV, Farb A, Mont EK, Kolodgie FD, Ladich E, et al. Pathology of drug-eluting stents in humans: delayed healing and late thrombotic risk. *Journal of the American College of Cardiology*. 2006;48(1):193-202.
- [9] Ong AT, McFadden EP, Regar E, de Jaegere PP, van Domburg RT, Serruys PW. Late angiographic stent thrombosis (LAST) events with drug-eluting stents. *Journal of the American College of Cardiology*. 2005;45(12):2088-92.
- [10] Iakovou I, Schmidt T, Bonizzi E, Ge L, Sangiorgi GM, Stankovic G, et al. Incidence, predictors, and outcome of thrombosis after successful implantation of drug-eluting stents. *Jama*. 2005;293(17):2126-30.
- [11] Pfisterer M, Brunner-La Rocca HP, Buser PT, Rickenbacher P, Hunziker P, Mueller C, et al. Late Clinical Events After Clopidogrel Discontinuation May Limit the Benefit of Drug-Eluting Stents: An Observational Study of Drug-Eluting Versus Bare-Metal Stents. *Journal of the American College of Cardiology*. 2006;48(12):2584-91.
- [12] Cutlip DE, Windecker S, Mehran R, Boam A, Cohen DJ, van Es G-A, et al. Clinical end points in coronary stent trials: a case for standardized definitions. *Circulation*. 2007;115(17):2344-51.
- [13] Colombo A, Drzewiecki J, Banning A, Grube E, Hauptmann K, Silber S, et al. Randomized study to assess the effectiveness of slow-and moderate-release polymer-based paclitaxel-eluting stents for coronary artery lesions. *Circulation*. 2003;108(7):788-94.
- [14] Holmes DR, Leon MB, Moses JW, Popma JJ, Cutlip D, Fitzgerald PJ, et al. Analysis of 1-year clinical outcomes in the SIRIUS trial: a randomized trial of a sirolimus-eluting stent versus a standard stent in patients at high risk for coronary restenosis. *Circulation*. 2004;109(5):634-40.
- [15] Kolandaivelu K, Swaminathan R, Gibson WJ, Kolachalama VB, Nguyen-Ehrenreich K-L, Giddings VL, et al. Stent thrombogenicity early in high-risk interventional settings is driven by stent design and deployment and protected by polymer-drug coatings. *Circulation*. 2011;123(13):1400-9.
- [16] Abhyankar AD, Thakkar AS. In vivo assessment of stent recoil of biodegradable polymer-coated cobalt-chromium sirolimus-eluting coronary stent system. *Indian heart journal*. 2012;64(6):541-46.
- [17] Rajasekhar D, Vanajakshamma V, Shashank C, Srinivasakumar M, Sivasankara C. The real world experience of the biodegradable polymer coated sirolimus eluting coronary stent system. *Catheterization and cardiovascular interventions*. 2014.
- [18] Chandwani P, Abhyankar AD, Prajapati JS, Porwal SC, Thakkar AS. Clinical Performance of the Cobalt-Chromium Biodegradable Polymer Coated Sirolimus-Eluting Stent in an Unselected Real-World Population. *International Journal of Clinical Medicine*. 2014;5:206-15.
- [19] Niemelä KO. Biodegradable coating for drug-eluting stents—more than a facelift? *European heart journal*. 2008;29(16):1930-31.

PARTICULARS OF CONTRIBUTORS:

1. Interventional Cardiologist, Lalitha Super Specialties Hospital (P) Ltd., Heart and Brain Centre, Kothapet, Guntur, Andhra Pradesh, India.
2. Interventional Cardiologist, Apollo Hospitals, Plot No. 1 A, Bhat GIDC Estate, Gandhinagar, Gujarat, India.
3. Interventional Cardiologist, Yashfeen Cardiac Hospital, Navsari, Gujarat, India.
4. Interventional Cardiologist, Lions Sterling Super Specialty Hospital, Mehsana, Gujarat, India.
5. Medical Writer, Department of Clinical Trials, Sahajanand Medical Technologies Pvt. Ltd., Surat, Gujarat, India.
6. Senior Manager, Clinical Research and Medical Writing, Department of Clinical Trials, Sahajanand Medical Technologies Pvt. Ltd., Surat, Gujarat, India.

NAME, ADDRESS, E-MAIL ID OF THE CORRESPONDING AUTHOR:

Dr. Raghava Sarma,
Lalitha Super Specialties Hospital (P) Ltd, Heart and Brain Centre, Kothapet, Guntur, Andhra Pradesh, India.
E-mail: drprvraghav@gmail.com

Date of Submission: **Mar 18, 2015**
Date of Peer Review: **May 28, 2015**
Date of Acceptance: **Jul 19, 2015**
Date of Publishing: **Aug 01, 2015**

FINANCIAL OR OTHER COMPETING INTERESTS: None.