

Effect of ACP-CPP Chewing Gum and Natural Chewable Products on Plaque pH, Calcium and Phosphate Concentration

SAIMA SULTAN¹, CHAITRA RAVISHANKAR TELGI², SEEMA CHAUDHARY³, NAVEEN MANUJA⁴, HARSIMRAN KAUR⁵, SINHA ASHISH AMIT⁶, RAVISHANKAR TELGI LINGESHA⁷

ABSTRACT

Introduction: Numerous epidemiological studies have documented dental caries as the major public health problems throughout the world. It is gradually increasing in the underdeveloped and developing countries especially in children due to increasing popularity of refined sugars.

Aim: The aim of the study was to evaluate the effect of natural chewable products (Tulsi, sesame seeds, fennel seeds, coconut) and ACP-CPP chewing gum on plaque pH, calcium and phosphate concentration.

Materials and Methods: A randomized controlled trial, with a cross-over study design, was conducted. Ten subjects aged 15-17 years who agreed to refrain from oral hygiene practice for 48 hours prior to the sample collection were selected for the study.

The baseline plaque pH, calcium and phosphate was measured and repeated after 5 and 30 minutes. It was ensured that each study participant was subjected to all the products making an effective sample of ten subjects per product. The data was statistically analysed.

Results: The mean pH in all the study groups increased after 5 minutes and 30 minutes compared to baseline, except for coconut group at 30 minutes and fennel group at 5 minutes. Highest increase in plaque calcium concentration was found in fennel group followed by recaldent and sesame, respectively. Whereas, the highest increase in plaque phosphate was found in recaldent group followed by sesame group and fennel group respectively.

Conclusion: Plant products can be effective, inexpensive, easily accessible methods of maintaining oral health. Further studies are recommended to confirm long term effects.

Keywords: Caries prevention, Coconut, Fennel Seeds, Sesame Seeds, Tulsi

INTRODUCTION

Numerous epidemiological studies have documented dental caries as the major public health problem throughout the world. It is gradually increasing in the underdeveloped and developing countries especially in children due to increasing popularity of refined sugars [1,2]. A causal association between the production of strong acids from plaque in response to sucrose and caries activity has become well established since 1940's by Stephan [3]. However, it has been now demonstrated that dental caries does not necessarily occur if there is a balance in net mineral loss and mineral gain at the plaque-tooth interface. The inorganic composition of dental plaque matrix work under the influence of ions-calcium, phosphorous and fluoride as a see-saw mechanism. The inorganic components in plaque mainly calcium and phosphorous which are primarily derived from saliva play an important role in maintaining balance between de and remineralisation [4]. The rate of dissolution of enamel hydroxyapatite is determined chiefly by the level of saturation with these ions in the oral environment and the level of pH. At a given pH, if the plaque fluid adjacent to the tooth is supersaturated with calcium and phosphate ions, the enamel certainly cannot undergo demineralisation at its surface [5].

Numerous studies have shown that increasing calcium and phosphate concentration, which thereby increases pH in the tooth environment favours remineralization [6-8]. But most of these preventive measures are either expensive or not easily reachable to a common man and not a realistic option for the poor.

Throughout the history of mankind many infectious diseases are known to be treated with herbal remedies [9]. Many traditional Indian folk remedies, without scientific substantiation have been used to prevent dental caries [10-12]. The World Health Organization reported that 80% of the world's population rely primarily on traditional medicine and a major part of the traditional therapies involve the use of plant extracts or their active constituents [13]. Plant products have received special attention because of being non-chemical, non-synthetic, safe and reliable. Hence, there is

an urgent need to promote traditional preventive measures that are acceptable, easily available, and cost-effective. Studies have demonstrated antimicrobial properties of many plant products. Tulsi extract at 4% has shown a maximum antimicrobial property against *Streptococcus mutans* [14].

Many invitro studies have shown anti-inflammatory, antioxidant, anticarcinogenic, antimicrobial potential of various plant products [15]. Subramaniam et al., determined the effect of aqueous and organic extracts of three types of tea (green, oolong, and black tea) on the growth of *S. mutans*. Authors found that all the three types of tea inhibited the growth of *S. mutans* [16]. Plant products as remineralizing agent yet needs substantial evidence.

As CPP-ACP is now the known agent for remineralization it was used for comparison with other plant products in this study.

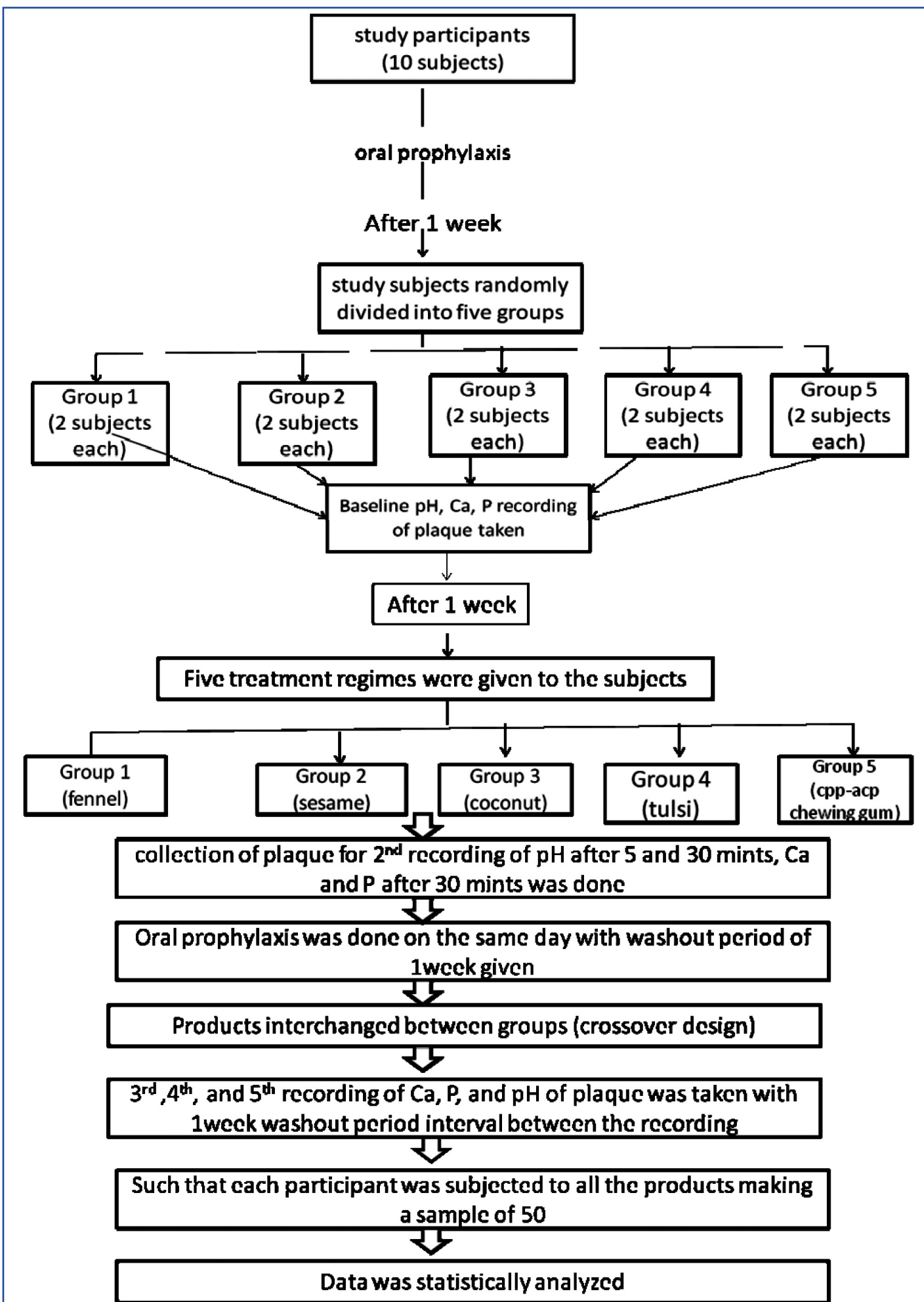
AIM

The aim of the study was to evaluate the effect of natural chewable products (Tulsi, sesame seeds, fennel seeds, coconut) and ACP-CPP chewing gum on plaque pH, calcium and phosphate concentration.

MATERIALS AND METHODS

A randomized controlled trial, with a cross-over study design, was conducted to assess the effect of four natural plant products (Fennel seeds (1gm), Sesame seeds (1gm), Coconut (1gm), Tulsi (5 fresh leaves) and CPP-ACP chewing gum (1pellet) on human dental plaque [Table/Fig-1].

Prior to the conduct of study ethical approval was taken from the Institutional Ethical and Review Board with reference no.-KDCRC/IERB/10/2014/09. The study was carried on a total of ten subjects, age 15-17-year-old, who fulfilled the eligibility criteria. Those subjects who were healthy, caries-free and willing to participate, were included into the study while those who were on medications (antibiotics, anti-acids) having effect on plaque formation and who were undergoing orthodontic/periodontal procedures; were



[Table/Fig-1]: Summary of methodology.

excluded from the study. The study protocol was explained to the subjects well in detail. They were informed that the study would long for a period of one & half month during which there should be no deviations from the routine dietary habits by the subjects. After taking their informed consent, oral prophylaxis was carried out for all the study participants one week before the baseline data recording; who were then instructed to refrain from oral hygiene practice for 48 hours prior to the sample (dental plaque) collection. Then the study sample was randomly divided into 5 groups (Fennel seeds, sesame seeds, coconut, Tulsi and CPP-ACP); 2 subject each. The baseline plaque pH was measured for all subjects at 4 sites (mesial surface of 16, distal surface of 26, mesial surface of 36 and distal surface of 46); using Beetrode pH Touch Electrode (World Precision Instruments, Inc.) connected to a display unit. To protect the cross contamination, the electrode was rinsed in distilled de-ionized water between each reading. Then equal amounts of pooled plaque samples were collected by removing all visible plaque from 1st and 3rd quadrants of the mouth using sterile blunt ended spatula avoiding obvious food debris. The plaque collection was standardized by taking equal volumes and plaque ionic calcium concentration was analysed using an electrode analyser (Spectrolab K) and inorganic phosphorus by the method of Chen & Toribara [17].

After the baseline estimation of plaque pH Ca and P; the subjects of the respective groups were asked to chew the equal quantity of products for 5 minutes and they were asked to swish their mouths with de-ionized water. Then pH was recorded at 5 and 30 minutes and Calcium and Phosphorus concentration was estimated after 30 minutes for second recording by a similar method.

Study participants were subjected to oral prophylaxis once again and then given a wash out period of one week after which similar procedure was repeated using cross-over design i.e.; by interchanging the product group allocation for 3rd, 4th and 5th recording, respectively. It was ensured that each study participant was subjected to all the products making a effective sample of 50. The data was statistically analysed. Difference in mean plaque pH values between the groups and at different time intervals were statistically analysed using One-way ANOVA and compared using post hoc test.

RESULTS

Data on the mean of pH at baseline, after 5 minutes and 30 minutes and mean of calcium and phosphate at baseline and after 30 minutes among all the five study groups are showed in [Table/Fig-2-4].

The mean pH in all the study groups increased after 5 minutes and 30 minutes compared to baseline and it was statistically significant, except for coconut group at 30 minutes and fennel group at 5 minutes. Recaldent group showed a highest increase in plaque pH after 5 minutes and 30 minutes.

A statistically significant rise in post calcium and post phosphate was found among all 5 groups. The highest increase in plaque calcium concentration was found in fennel group followed by recaldent and sesame, respectively. Whereas, the highest increase in plaque phosphate was found in recaldent group followed by sesame group and fennel group respectively. [Table/Fig-5] represents

	Baseline pH (mean)	5 min pH (mean)	5 min pH (p value)	30 min pH (mean)	30 min pH (p value)
Coconut	6.65	6.81	.008*	6.80	.071
Tulsi	6.62	6.87	.001*	6.92	.001*
Sesame	6.66	6.83	.001*	6.93	.001*
Fennel	6.66	6.69	.677	6.80	.029*
recaldent	6.66	6.89	0.01*	7.04	0.01*

[Table/Fig-2]: Mean plaque pH values before and after chewing coconut, tulsi, sesame, fennel and recaldent at baseline, 5 minutes and 30 minutes. *statistically significant when compared with baseline pH using t-test

	coconut	tulsi	sesame	fennel	Recaldent
Baseline Ca	2.37	2.25	2.29	2.18	2.36
Post Ca	2.72	2.50	2.73	2.75	2.83
diff	0.35	0.25	0.44	0.57	0.47
p-value	.004*	.006*	.000*	.008*	.001*

[Table/Fig-3]: Mean calcium concentration values before and after chewing coconut, tulsi, sesame, fennel and recaldent at baseline and 30 minute interval using paired-t Test. *Statistically significant when compared with baseline pH using t-Test

	coconut	tulsi	sesame	fennel	Recaldent
Baseline phosphate	2.42	2.22	2.31	2.17	2.37
Post phosphate	2.59	2.45	2.54	2.36	2.90
diff	0.17	0.23	.23	0.18	.53
p-value	0.049*	0.025*	0.016*	0.042*	.001*

[Table/Fig-4]: Mean phosphate concentration values before and after chewing coconut, tulsi, sesame, fennel and recaldent at baseline and 30 minute interval using paired-t Test. *statistically significant

		Mean Square	F	p-value	
Pre-pH	Between Groups	.003	.112	.978	
	Within Groups	.026			
pH after 5 mints	Between Groups	.062	3.564	.013	significant
	Within Groups	.017			
pH after 30 mints	Between Groups	.103	4.695	.003	significant
	Within Groups	.022			
Pre- calcium	Between Groups	.063	1.339	.270	
	Within Groups	.047			
Post - calcium	Between Groups	.382	4.020	.007	significant
	Within Groups	.095			
Pre - phosphates	Between Groups	.100	1.449	.233	
	Within Groups	.069			
Post- phosphates	Between Groups	.420	4.678	.003	significant
	Within Groups	.090			

[Table/Fig-5]: Comparison of mean of pH, calcium and phosphate at different time intervals in five groups using ANOVA.

Ph after 5 min	pH after 30 min	Post calcium	Post phosphate
Coconut vs fennel	Fennel vs tulsi	Fennel vs recaldent	Fennel vs recaldent
Fennel vs sesame	Fennel vs recaldent	Tulsi vs recaldent	Tulsi vs recaldent
Fennel vs tulsi			Sesame vs recaldent
Fennel vs recaldent			

[Table/Fig-6]: Post-hoc test for significant pairs for ph, calcium and phosphate

	Pre pH (mean)	5 min pH (mean)	30 min pH (mean)	p-value 5 min	p-value 30 min
Coconut	6.65	6.81	6.80	.008	.071
Tulsi	6.62	6.87	6.92	.001	.001
Sesame	6.66	6.83	6.93	.001	.001
Fennel	6.66	6.69	6.80	.677	.029
recaldent	6.66	6.89	7.04	0.01	0.01

[Table/Fig-7]: pH values using post-hoc test

	Pre cal (mean)	Post cal (mean)	Pre phosp	Post phosp	p-value cal	p-value phosp
Coconut	2.37	2.72	2.42	2.59	.004	.049
Tulsi	2.25	2.50	2.22	2.45	.006	.025
Sesame	2.29	2.73	2.31	2.54	.001	.016
Fennel	2.18	2.75	2.18	2.36	.038	.042
recaldent	2.36	2.83	2.37	2.90	.000	.001

[Table/Fig-8]: Calcium & phosphate values using post-hoc test.

statistical analysis using Anova, used to compare between the five study groups. [Table/Fig-6] represents Post-hoc analysis showing significant pairs as obtained from [Table/Fig-7,8].

DISCUSSION

Plant products have stood the test of time for their safety, efficacy, cultural acceptability and lesser side effects in contrast to the synthetics that may be harmful to human and environment [18,19]. In addition to their health benefits very few studies have documented their rational of use in dentistry. In this study four commonly available plant products as fennel seeds, tulsi leaves, sesame seeds and coconut were compared with CPP-ACP containing chewing gum for their effect on dental plaque.

Fennel seeds, scientifically known as *foeniculum vulgare* are a shout, tall, aromatic herb. It is grown extensively all over Europe, Middle East, China and Turkey. They are concentrated source of minerals and vitamins. Its mineral and vitamin contents are calcium, phosphorous, iron, sodium, potassium, thiamine, riboflavin, niacin and vitamin C [20].

Koudela and Petrikova suggested the monitored parameters of potassium, sodium, manganese and calcium in fennel as 504.6, 29.45, 23.55 and 20.95 mg/100 g and trace amount of iron and zinc, correspondingly [21]. The results of the present study revealed that fennel chewing led to an increase in plaque pH, calcium and phosphate concentration. This shows that the diffusion of calcium and phosphate into plaque has occurred which may be due to the leaching of calcium from fennel seeds due to chewing which increases salivary flow and hence increases pH and calcium and phosphate concentration of plaque.

Shirahatti RV et al., evaluated the effect of fennel seeds on plaque and salivary pH and found that these seeds increased pH at 5 minutes, although it was not significant [22]. Ajithkrishnan CG et al., found a statistically significant rise in salivary pH immediately after chewing fennel seeds [23].

Tulsi, queen of herbs, scientifically known as *Ocimum sanctum* is a medicinal herb used in Ayurvedic medicine since ancient times. Some of the main chemical constituents of *Tulsi* are: Oleanolic acid, ursolic acid, rosmarinic acid, eugenol, carvacrol, linalool, β -caryophyllene (about 8%), β -elemene (11.0%), and germacrene D (about 2%) [24]. Our results revealed a significant increase in plaque pH after 5 minutes and 30 minutes and a significant increase in calcium and phosphate concentration after chewing tulsi leaves. Studies have shown Tulsi to inhibit the plaque biofilm formation by reducing the adhesion of microbial pathogens to the tooth surface, which is a primary event in the initiation of dental caries [25,26]. This property of inhibition of biofilm formation is due to the antimicrobial compounds in it such as antibiotics, cell wall degrading enzymes [27]. These results in inhibition of many pathogenic organisms which inturn increases pH and hence can decrease the caries activity. It has maximum antimicrobial potential at the 4% concentration level [28]. Due to non-availability of such similar studies in the literature the exact mechanism of action of these plant products on plaque pH and calcium and phosphate concentration is inconclusive.

Sesame seeds, scientifically known as *Sesamum indicum* is considered to be the oldest oilseed crop known to humanity. It has been utilized for over 5,000 years and may be one of the most potent, nutrient-dense medicinal foods still used today. The seeds are especially high in calcium, phosphate, potassium, manganese, sodium, iron and low amounts of zinc [29].

After chewing sesame seeds subjects showed a significant increase in plaque pH after 5 and 30 mints which could be because of chewing effect which increases salivary flow and hence increases plaque pH. Asokan S et al., in their study found a significant reduction in the *S. mutans* count in plaque and saliva of children after oil pulling with 1 teaspoon (5ml) of sesame oil [30]. Rise in calcium

and phosphate concentration could be due to presence of these ions in sesame seeds. Due to the scarcity of similar studies exact mechanism describing the increase in the concentration of calcium and phosphate concentration and pH after chewing sesame is yet to be proven.

Coconut, scientifically called as *Cocos nucifera*, belongs to the large palmaceae family of palm trees. It has excellent source of minerals [31]. Coconut oil extracted from dry nut is an excellent emollient agent. It contains lauric acid which is a bacteria whooping ingredient. It inhibits *S. mutans* to adhere on the tooth surface and hence inhibits dental caries [32]. Thaweboon et al., in their study have found that 5ml of coconut oil exhibited antimicrobial activity against *S. mutans* and *C. albicans* whereas 5ml of sesame oil had activity against *S. mutans* [33].

Results after chewing coconut showed a significant rise in calcium and phosphate concentration but plaque pH raised only after 5 minutes which slowed down after 30 minutes, although the drop in pH was not much. The increase in calcium and phosphate concentration could be due to the increase of these ions in saliva due to chewing which increases salivary flow and hence increases pH and calcium and phosphate concentration of plaque.

Chewing gum in various forms is as popular as ever. Numerous studies have demonstrated anticariogenic potential of Casein phosphopeptide amorphous calcium phosphate (CPP-ACP) nanocomplexes [34-36]. The anticariogenic property of CPP-ACP has been attributed to the ability of CPP to localize amorphous calcium phosphate at the tooth surface, maintaining a state of supersaturation with respect to enamel mineral, thereby depressing enamel demineralisation and enhancing remineralization [37]. Our results showed a highest rise in the mean plaque pH after 5 minutes and 30 minutes which were statistically significant. Rise in the phosphate concentration in this group was highest. However, calcium concentration was highest in fennel group than CPP-ACP. RECALDENT™ (CPP-ACP) is a revolutionary ingredient that stabilises and delivers high quantities of calcium and phosphate, which are the essential building blocks for teeth [38]. Santhosh BP et al., observed a significantly increase in the salivary calcium and phosphate concentration after chewing CPP-ACP containing chewing gum [8]. But there are reports in the literature where children have swallowed chewing gums causing gastrointestinal problems in them [39]. Hence, cannot be recommended below 4 years. Also people with milk protein allergy need to avoid such products [40,41]. In addition, CPP-ACP containing chewing gums are costly and not easily reachable to rural areas. On the contrary, the plant products used in this study are excluded from such side effects. As in if swallowed they possess more beneficial than harmful effects.

The increase of calcium in fennel group than CPP-ACP chewing gum could be due to some intrinsic factors like texture, nature and difference in the composition and intrinsic variations among subjects. A thorough knowledge of this difference is to be studied at a molecular level.

Sesame and fennel seeds are often used in India as mouth fresheners and aids in digestion after meals. They have unlimited health benefits. Authors have described the use of fennel seeds because of their nutritional value, easy availability and common use [42]. Apart from the general health benefits from chewing these seeds, our study has shown their benefits towards dental health also. Benefits in terms of their composition, longer storage of fennel seeds, fennel seeds can be consumed in combination with sesame seeds and are easily accessible to the poorest.

LIMITATION

Due to the lack of similar clinical trials in the literature, enough supporting articles could not be used in our discussion.

CONCLUSION

A need to explore and promote the use of such locally available and accessible methods gave us the opportunity to evaluate the dental plaque pH and calcium and phosphate concentration. Caries progression control, especially in its initial clinical stages, may be favoured by chewing such plant products. These can be considered as the measures for remineralization beyond fluoride. Taking more advantage of the composition and the nutritional value of such natural plant products in improving oral health, we can serve our patients better. Further studies on the effect of these plant products on oral cavity and caries prevention are recommended.

REFERENCES

- [1] Bonecker M, Cleaton-Jones P. Trends in dental caries in Latin American and Caribbean 5-6 and 11-13 year-old children: a systematic review. *Community Dent Oral Epidemiol.* 2003;31:152-57.
- [2] Truin GJ, van Rijkom HM, Mulder J, Van't Hof MA. Caries trends 1996-2002 among 6- and 12-year-old children and erosive wear prevalence among 12-year-old children in The Hague. *Caries Res.* 2005;39:2-8.
- [3] Stephan RM. Changes in hydrogen ion concentrations on tooth surfaces and in carious lesions. *J Am Dent Assn.* 1940;27:718-23.
- [4] Moynihan PJ, Ferrier S and Jenkins GN. The cariostatic potential of cheese: cooked cheese-containing meals increase plaque calcium concentration. *British Dental Journal.* 1999;187(12): 664-67.
- [5] Aiuchi H, Kitasako Y, Fukuda Y, Nakashima S, Burrow MF, Tagami J. Relationship between quantitative assessments of salivary buffering capacity and ion activity product for hydroxyapatite in relation to cariogenic potential. *Aust Dent J.* 2008;53:167-71.
- [6] Akay GA, Altay N, Cahs U. Effect of chewing gum containing calcium-fluoride on salivary and plaque in situ. *Turkish J Pharm Sci.* 2004;1(3):177-92.
- [7] Burt BA. The use of sorbitol- and xylitol-sweetened chewing gum in caries control. *JADA.* 2006;137:190-96.
- [8] Santhosh BP, Jethmalani P, Shashibhushan KK, Subba Reddy VV. Effect of casein phosphopeptide – amorphous calcium phosphate containing chewing gum on salivary concentration of calcium and phosphorus: An in vivo study. *JISPPD.* 2012;30(2):146-50.
- [9] Pinn G. Herbal medicine in infectious disease. *Aust Fam Physician.* 2001;30(7): 681-84.
- [10] Pourselami H. The Effects of Plant Extracts on Dental Plaque and Caries. *Contemporary Approach to Dental Caries.* 395-402.
- [11] Prajapati RA, Raol BV. The study on the efficacy of some herbal extracts for the control of dental caries pathogen-*Streptococcus mutans*. *International Journal of Pharmaceutical Science and Health Care.* 2014;1(4):49-58.
- [12] Chaudhary NJ, Krishnan CG, Thanveer K, Shah H. Anti-microbial effect of Pudina extract on *streptococcus mutans*: In-vitro study. *J Int Oral Health.* 2012;4(3):45-50.
- [13] Ekor M. The growing use of herbal medicines: issues relating to adverse reactions and challenges in monitoring safety. *Front pharmacol.* 2014;4(177): 1-10
- [14] Agarwal P, Nagesh L, Murlikrishnan. Evaluation of the antimicrobial activity of various concentrations of Tulsi (*Ocimum sanctum*) extract against *Streptococcus mutans*: An invitro study. *Indian J Dent Res.* 2010;21(3):357-59.
- [15] Groppo FC, Bergamaschi C, Cogo K, Michelle Franz-Montan, Lopes Motta RH, de Andrade ED. Use of Phytotherapy in Dentistry. *Phytotherapy Research.* 2008;22:993-98.
- [16] Subramaniam P, Eswara U, Maheshwar R. Effect of different types of tea on *Streptococcus mutans*: An in vitro study. *Indian Journal of Dental Research.* 2012;23(1):43-48.
- [17] Chen PS, Toribara TY, Warner H. Microdetermination of Phosphorus. *Anal Chem.* 1956;28(11):1756-58.
- [18] Al-Otaibi M, Al-Harthy M, Soder B, Gustafsson A, Angmar MB. Comparative effect of chewing sticks and toothbrushing on plaque removal and gingival health. *Oral Health Prev Dent.* 2003;1:301-07.
- [19] Palombo EA. Traditional medicinal plant extracts and natural products with activity against oral bacteria: potential application in the prevention and treatment of oral diseases. *Evidence Based Complementary and Alternative Medicine.* 2011;2011:680354,1-15.
- [20] Fateh E, Noroozi H, Farbod M, Gerami F. Assessment of Fennel (*Foeniculum vulgare*) seed germination characteristics as influenced by ultrasonic waves and magnetic water. *Euro J Exp Bio.* 2012;2(3):662-66.
- [21] Koudela M, Petrikova K. Nutritional compositions and yield of sweet fennel cultivars *Foeniculum vulgare* Mill. Ssp. *Vulgare* var. *Azoricum* (Mill.) *Thell Hort Sci.* 2008;35(1):1-6.
- [22] Shirahatti RV, Ankola AV, Nagesh L. Effect of Fennel Seeds on Dental Plaque and Salivary pH-A Clinical Study. *Journal of Oral Health Community Dent.* 2010;4(2):38-41.
- [23] Ajithkrishnan CG, Thanveer K, Singh RP. An In vivo Evaluation of the Effect of Fennel Seeds Chewing on Salivary pH. *Journal of Oral Health Community Dentistry.* 2014;8(2)79-81.
- [24] Padalia RC, Verma RS. Comparative volatile oil composition of four *Ocimum* species from northern India. *Nat Prod Res.* 2011;25:569-75.
- [25] Gupta D, Bhaskar DJ, Karim W. A randomized controlled clinical trial of *Ocimum sanctum* and chlorhexidine mouthwash on dental plaque and gingival inflammation. *J Ayurveda Integr Med.* 2014;5(2):109-16.
- [26] Jain I, Jain P, Bisht D, Sharma A, Srivastava B, Gupta N. Use of Traditional Indian Plants in the Inhibition of Caries-Causing Bacteria - *Streptococcus mutans*. *Brazilian Dental Journal.* 2015;26(2):110-15.
- [27] Ramesh G, Nagarajappa R, Madhusudan AS, et al. Estimation of salivary and tongue coating pH on chewing household herbal leaves: A randomized controlled trial. *Anc Sci Life.* 2012;32(2):69-75.
- [28] Agarwal P, Nagesh L, Murlikrishnan. Evaluation of antimicrobial activity of various concentration of Tulsi extract against *S mutans*. An invitro study. *IJDR.* 2010;21:357-59.
- [29] Alyemini MN, Basahy AY, Sher H. Physico-chemical analysis and mineral composition of some sesame seeds (*Sesamum Indicum* L.) grown in the Gizan area of Saudi Arabia. *Journal of Medicinal Plants Research.* 2011;5(2):270-74.
- [30] Asokan SA, Rathana JA, Muthu MS, et al. Effect of oil pulling on *Streptococcus mutans* count in plaque and saliva using Dentocult SM Strip mutans test: A randomized, controlled, triple-blind study. *J Indian Soc Pedod Prev Dent.* 2008;26(1):12-17.
- [31] Solangi AH, Iqbal MZ. Chemical composition of meat (kernel) and nut water of major coconut (*cocos nucifera*) Cultivars at coastal area of pakistan. *Pak J Bot.* 2011;43(1):357-63.
- [32] Tomar P, Hongal S, Jain M, Rana K, Saxena V. Oil Pulling and Oral Health: A Review. *IJSS Case Reports & Reviews.* 2014;1(3):33-37.
- [33] Thaweboon S, Nakaparksin J, Thaweboon B. Effect of Oil-Pulling on Oral Microorganisms in Biofilm Models. *Asia J Public Health.* 2011;2(2):62-66.
- [34] Moezizadeh M, Moayedi S. Anticariogenic effect of amorphous Calcium Phosphate stabilized by casein phosphopeptide: A review article. *Res J Biol Sci.* 2009;4(1):132-36.
- [35] Llena C, Forner L, Baca P. Anticariogenicity of Casein Phosphopeptide-amorphous Calcium Phosphate: A Review of the Literature. *Journal of Contemporary Dental Practice.* 2009;10(3):1-9.
- [36] Reema SD, Laheri PK, Roy SS. Review of casein phosphate –amorphous calcium phosphate. *Chinese Journal Of Dental Research.* 2014;17(1):7-14.
- [37] Vashist R, Kumar A, Indira R, Srinivasan MR, Ramachandran S. Remineralization of early enamel lesions using casein phosphopeptide amorphous calcium phosphate: An ex-vivo study. *Contemporary Clinical Dentistry.* 2010;1(4):210-13.
- [38] Sharma E, Vishwanathamurthy RA, Nadell M, et al. A randomised study to compare salivary pH, calcium, phosphate and calculus formation after using anticavity dentifrices containing Recaldent and functionalized tri-calcium phosphate. *Journal of Indian Society of Periodontology.* 2012;16(4):504-07.
- [39] Bajomo AA. Aerophagia. *Nigerian Journal of Surgical Research.* 2004;6(1-2): 71-72.
- [40] Morgan MV, Adams GG, Bailey DL, Tsao CE, Fischman SL, Reynolds EC. Clinical Trial of CPP-ACP in Sugar-Free Chewing Gum. *Caries Research.* 2008;42:171-84.
- [41] Konekeri V, Bennadi D, Manjunath M, Kshetrimayum N, Siluvai S, Reddy CV. A Clinical Study to assess the Effectiveness of CPP-ACP versus Potassium-nitrate (KNO₃) on cervical dentine hypersensitivity. *Journal of Young Pharmacists.* 2015;7(3):217-24.
- [42] Bukhari H, Shehzad A, Saeed K, Sadiq BM, Tanveer S, Iftikhar T, et al. Compositional profiling of fennel seed. *Pak J Food Sci.* 2014;24(3):132-36.

PARTICULARS OF CONTRIBUTORS:

1. Senior Lecturer, Department of Pedodontics and Preventive Dentistry, Kothiwal Dental College and Research Centre, Moradabad, India.
2. Reader, Department of Pedodontics and Preventive Dentistry, Kothiwal Dental College and Research Centre, Moradabad, India.
3. Professor and Head, Department of Pedodontics and Preventive Dentistry, Kothiwal Dental College and Research Centre, Moradabad, India.
4. Professor, Department of Pedodontics and Preventive Dentistry, Kothiwal Dental College and Research Centre, Moradabad, India.
5. Reader, Department of Pedodontics and Preventive Dentistry, Kothiwal Dental College and Research Centre, Moradabad, India.
6. Reader, Department of Pediatric Dentistry, Kothiwal Dental College and Research Centre, Moaradabad, Uttar Pradesh, India.
7. Professor, Department of Public Health Dentistry, Kothiwal Dental College and Research Centre, Moaradabad, Uttar Pradesh, India.

NAME, ADDRESS, E-MAIL ID OF THE CORRESPONDING AUTHOR:

Dr. Chaitra Ravishankar Telgi,
Reader, Department of Pedodontics and Preventive Dentistry, Kothiwal Dental College and Research Centre,
Moradabad-244001, India.
E-mail: chaitu4363@yahoo.co.in

FINANCIAL OR OTHER COMPETING INTERESTS: None.

Date of Submission: **Sep 05, 2015**

Date of Peer Review: **Nov 06, 2015**

Date of Acceptance: **Dec 07, 2015**

Date of Publishing: **Apr 01, 2016**